



Alexander Graham Bell Montessori School - AEHI  
Illinois School for the Deaf  
CueSign, Inc.



# Camp Chi-CueSign-Go

## What is Camp Chi-CueSign-Go?

### What We Offer:

- Cued Speech Workshops
- ASL Workshops
- Activities & learning for the children while the adults participate in classes/workshops...
- Socialization opportunities for everyone...
- Deaf Role Models...

Camp Chi-Cue-Go and CueSign, Inc. are collaborating to bring you a brand new experience! Come join us at Camp Chi-CueSign-Go this summer...all ages, backgrounds, and ability levels are welcome. Learn cued American English and American Sign Language. Reconnect with old friends and make some new ones!

Camp Chi-CueSign-Go believes in deaf and hard-of-hearing children having the opportunity to have full and equal access to both ASL and English as well as providing a support system and resources for families. ASL and Cued English classes will be provided as well as other learning opportunities and lots of mingling! Professionals, parents, family members, friends of the deaf community, and deaf/hoh individuals are invited to attend. Meals are included from Thursday morning to Sunday morning.

**\*Continuing Education Units offered (CEUs and CPDUs)\***

**When:** July 10-14, 2019

**Where:** MacMurray College & Illinois School for the Deaf, Jacksonville, IL

**Who:** Anyone who wants to learn cued American English & American Sign Language

## What will the days look like?

Wednesday,

July 10th

6:00pm-9:00pm

Registration

Thursday, July 11th

8:00-9:00 Registration &  
Breakfast

9:00-12:00 Classes

12:00-1:00 Lunch

1:00-5:00 Classes

5:00-10:00 Dinner and  
Evening Activities

Friday, July 12th &

Saturday, July 13th

8:00-9:00 Breakfast

9:00-12:00 Classes

12:00-1:00 Lunch

1:00-5:00 Classes

5:00-10:00 Dinner and  
Evening Activities

Sunday, July 14th

8:00-9:00 Breakfast

9:00-12:00 Classes &

Wrap-up

**Questions? Contact the Chi-CueSign-Go team at [ChiCueSign@gmail.com](mailto:ChiCueSign@gmail.com)**

## How Much?

\$200 per adult, age 13+

\$125 per youth, age 8-12

\$75 per child, age 3-7

Children 2 and under free

\*\*Fees include meals (Thursday-Sunday), snacks, & materials, and are non-refundable after July 1st. Check, credit card, or money orders accepted.

**Registration open  
March 15, 2019!  
Register online**

[www.agbms.org/  
camp-chi-cue-go](http://www.agbms.org/camp-chi-cue-go)  
OR  
[www.cuesign.org](http://www.cuesign.org)

- St. Louis Lambert International Airport (STL), St. Louis, Missouri ~85 miles
- Abraham Lincoln Capital Airport (SPI), Springfield, IL ~ 39 miles
- Chicago O'Hare Airport (ORD), Chicago, IL ~ 238 miles
- Amtrak has a station in Springfield, IL and runs between St. Louis, Springfield, and Chicago

\*\* For additional transportation information, contact us at [ChiCueSign@gmail.com](mailto:ChiCueSign@gmail.com)!

## Where Can You Stay?

- **MacMurray College Dorms**

\$60 per person for all 4 nights (rooms of 2 or 4). Bring your own bedding/pillows.

- **Hotel blocks (reserved under CueSign)**

*Hampton Inn*

1725 W. Morton Ave., Jacksonville, IL  
10 rooms with two double beds each  
\$99 +tax/night

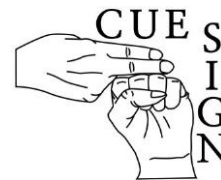
*Best Western*

1709 W. Morton Ave., Jacksonville, IL  
5 rooms with two queen beds  
5 rooms with a single king bed  
\$69.99 +tax/night on Wed/Thurs nights  
\$129.99 +tax/night on Fri/Sat nights

## Camp Chi-CueSign-Go Collaborators



[www.agbms.org](http://www.agbms.org)



[www.cuesign.org](http://www.cuesign.org)



[www.illinoisdeaf.org](http://www.illinoisdeaf.org)



**CueSignInc**

**Register before July 1st to avoid an additional \$50 late fee!**

[www.agbms.org/camp-chi-cue-go](http://www.agbms.org/camp-chi-cue-go) OR [www.cuesign.org](http://www.cuesign.org)